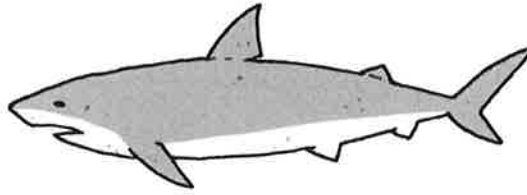


Like an Animal

Joan Poulson

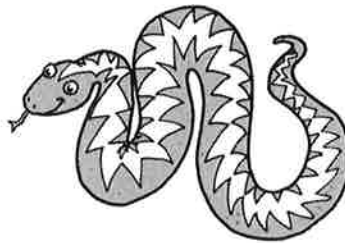
¹ I snarl and snap
around the park
pretend that I'm a
strong, fierce shark.



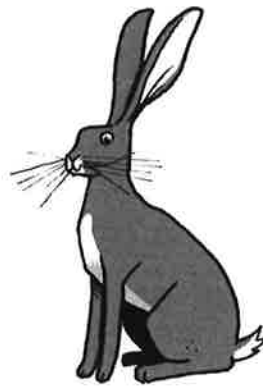
⁵ I jump and hop
off a fallen log
pretend that I'm a
bright eyed frog.



⁹ I slide zigzag
beside the lake
pretend that I'm a
patterned snake.



¹³ I leap and spring,
bound everywhere
pretend that I'm a
long-legged hare.



Name: _____ Class: _____ Date: _____

1. Write the words from the poem that rhyme with:

park _____

log _____

lake _____

1 mark

2. Draw lines from the animal to what it looks like.

shark
frog
snake
hare

long-legged
patterned
bright eyed
fierce

1 mark

3. Where does the child pretend to be a snake?

1 mark

4. Underline three words which describe how the hare moves.

*"I leap and spring,
bound everywhere
pretend that I'm a
long-legged hare." (lines 13–16)*

1 mark

5. Why was the boy moving a lot in the poem?

1 mark

6. Read the title of the poem. What does it tell you about what the boy is doing?

1 mark