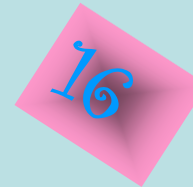
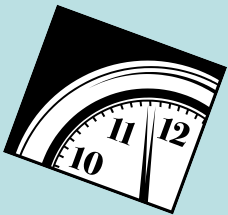
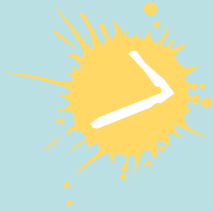




The Inverse



*Learning Objective:
To write related
addition and
subtraction facts*

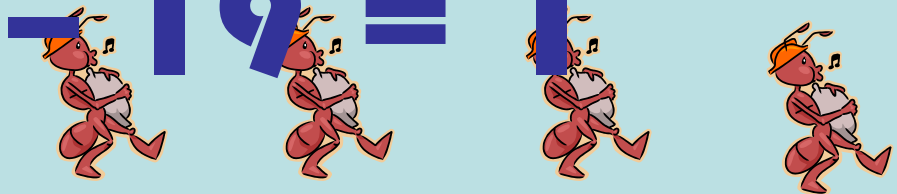
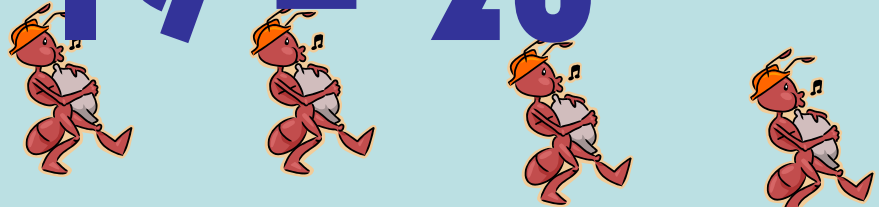
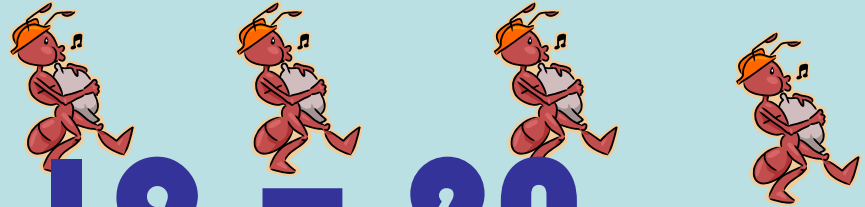
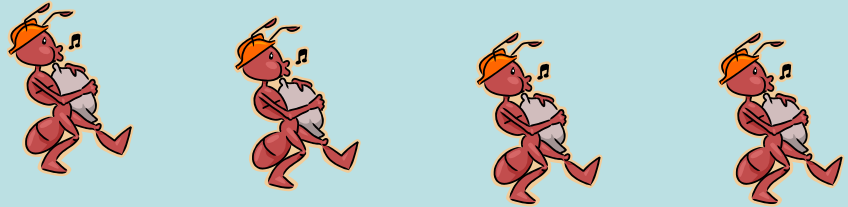

$$0 + 20 = 20$$

$$20 - 20 = 0$$



$$1 + 19 = 20$$

$$20 - 19 = 1$$



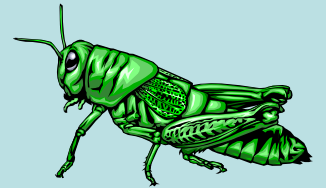
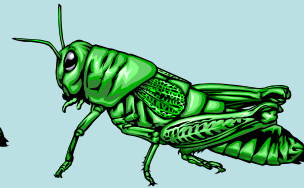
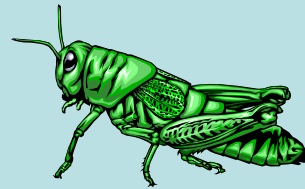
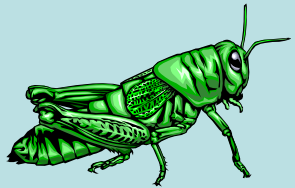
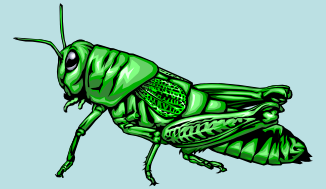
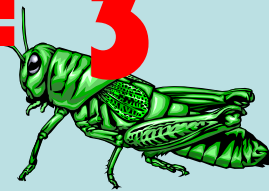
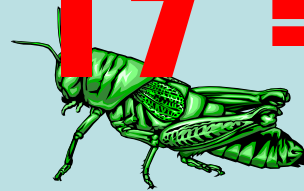
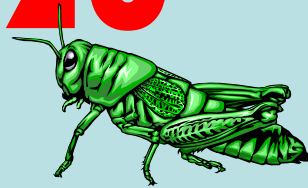
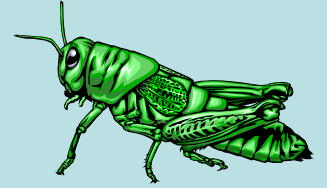
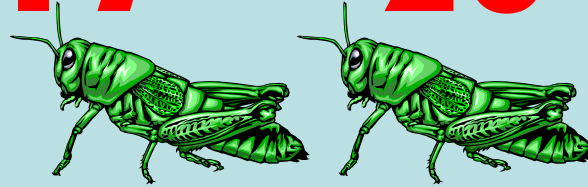
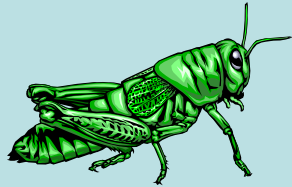
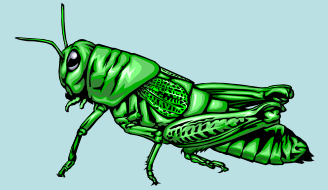
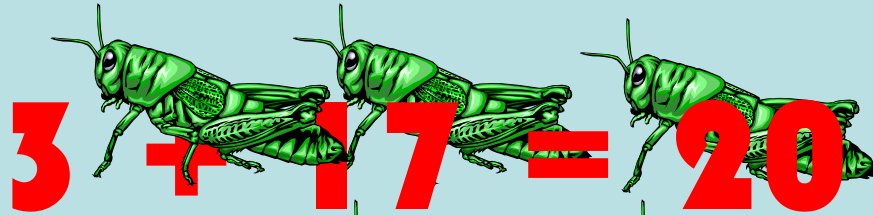
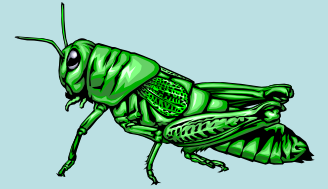
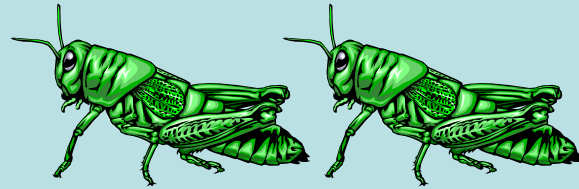
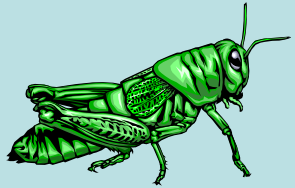


$$2 + 18 = 20$$



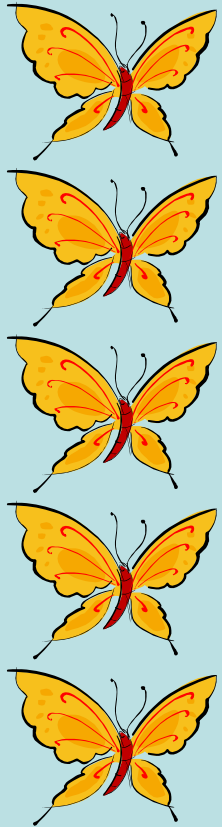
$$20 - 18 = 2$$





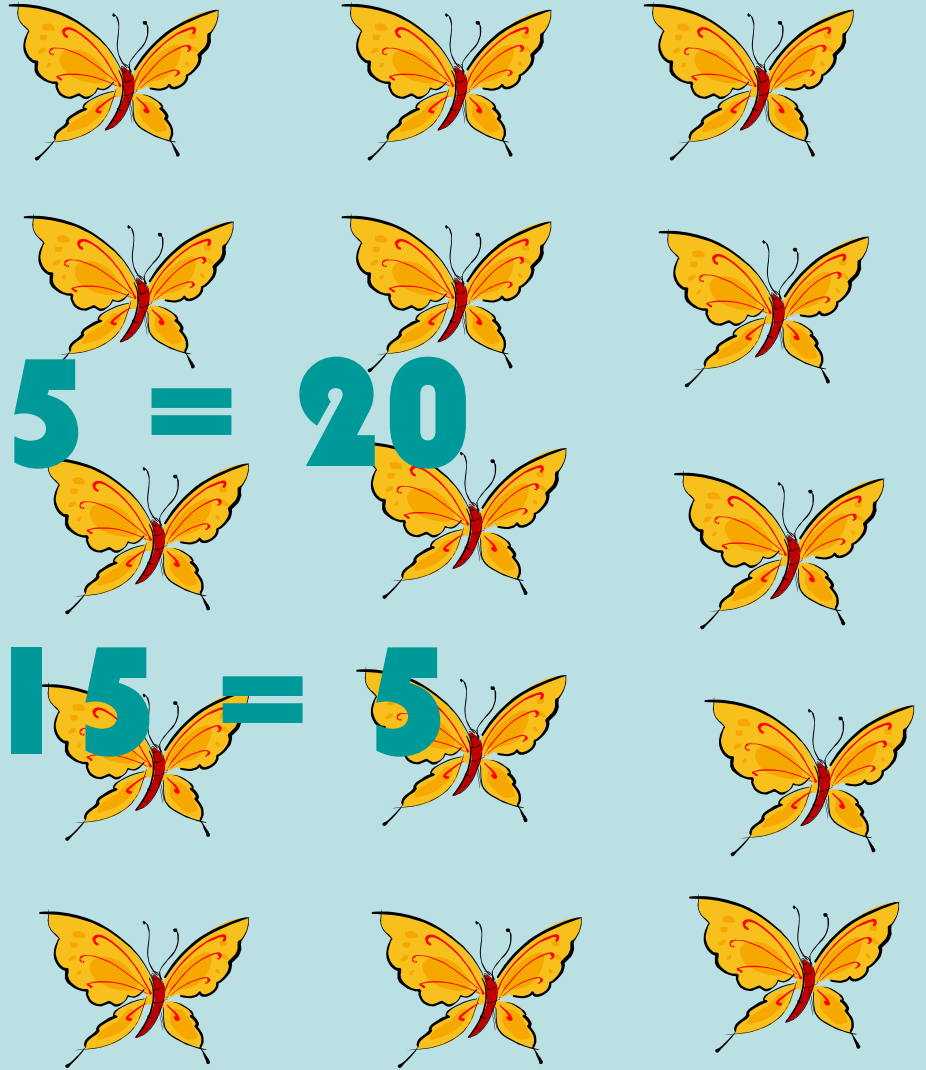

$$4 + 16 = 20$$

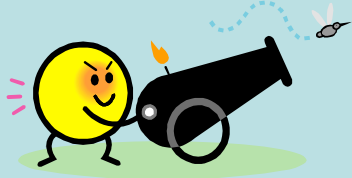
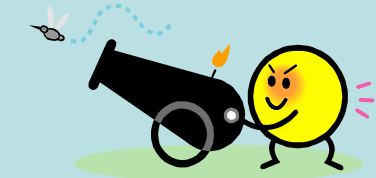
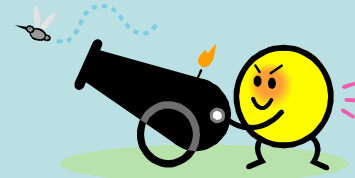
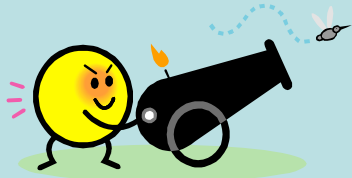
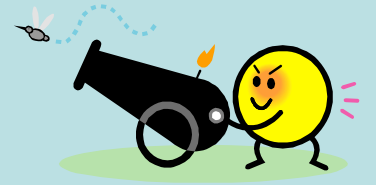
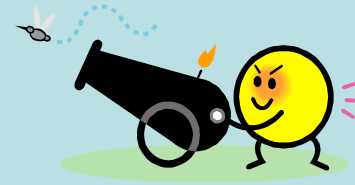
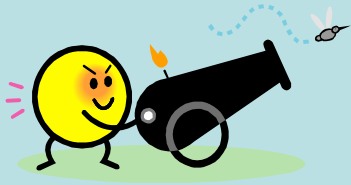
$$20 - 16 = 4$$



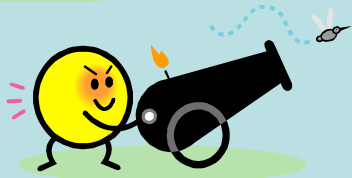
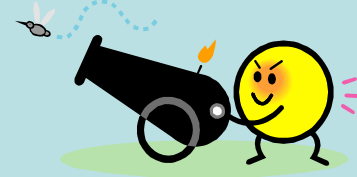
$$5 + 15 = 20$$

$$20 - 15 = 5$$

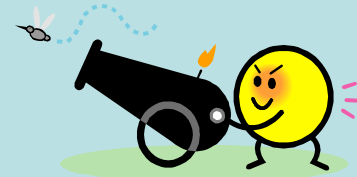
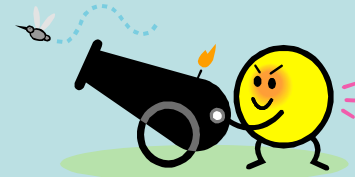
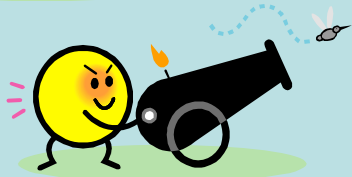
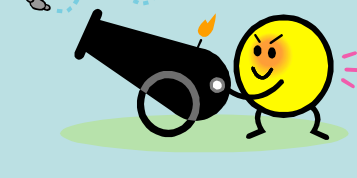
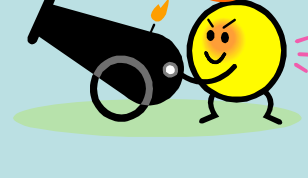
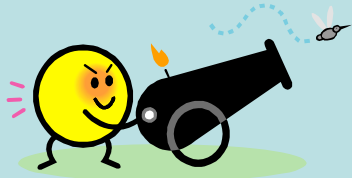
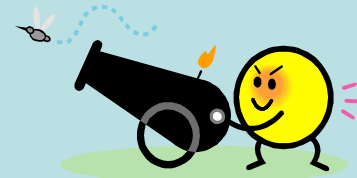




$$6 + 14 = 20$$



$$20 - 14 = 6$$




$$7 + 13 = 20$$

$$20 - 13 = 7$$



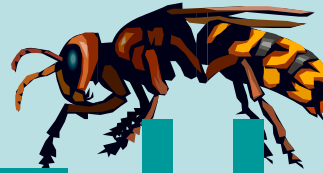
$$8 + 12 = 20$$

$$20 - 12 = 8$$





$$9 + 11 = 20$$



$$20 - 11 = 9$$



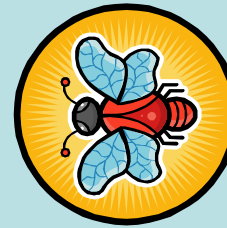
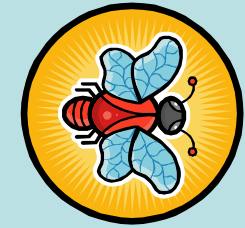
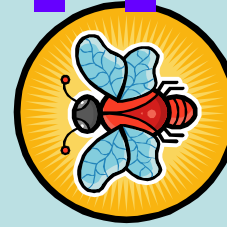
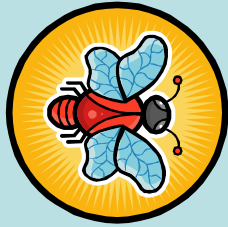
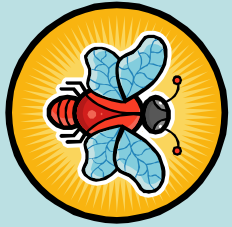
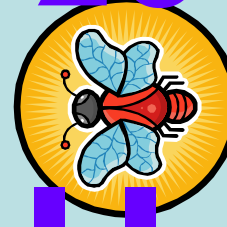
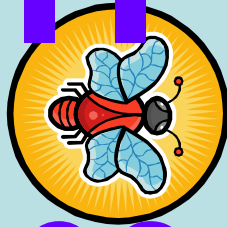
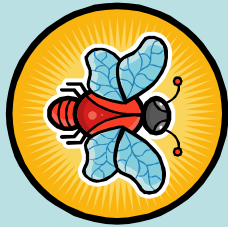
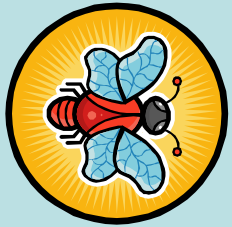
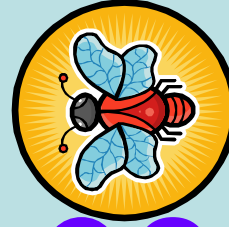
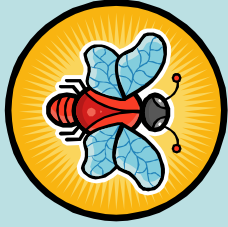
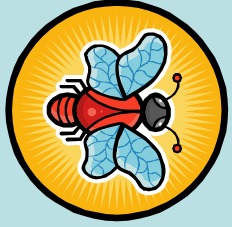
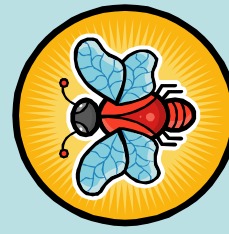
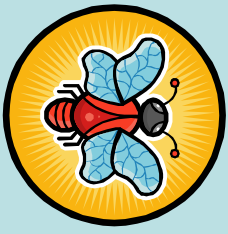
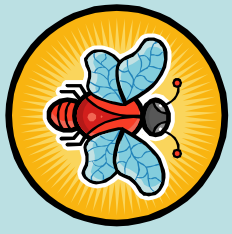


$$10 + 10 = 20$$



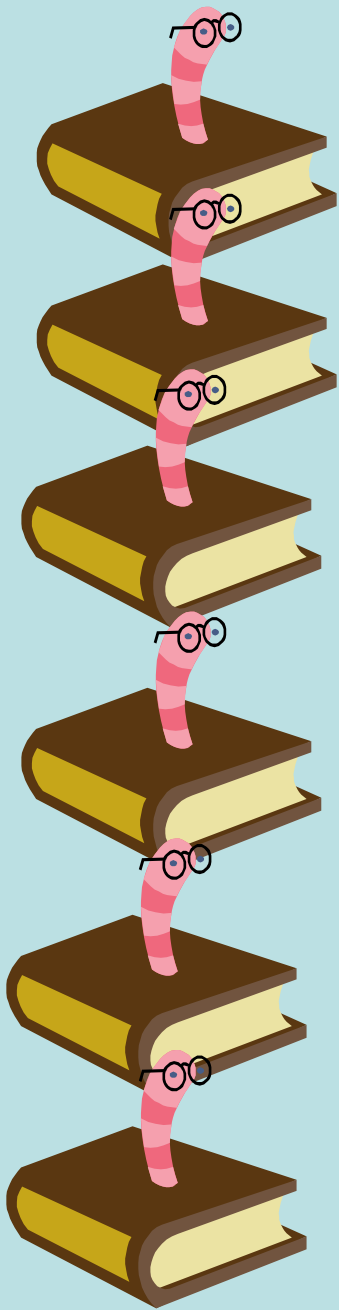
$$20 - 10 = 10$$





$$11 + 9 = 20$$

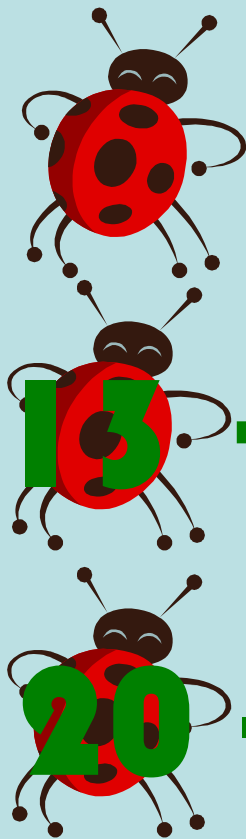
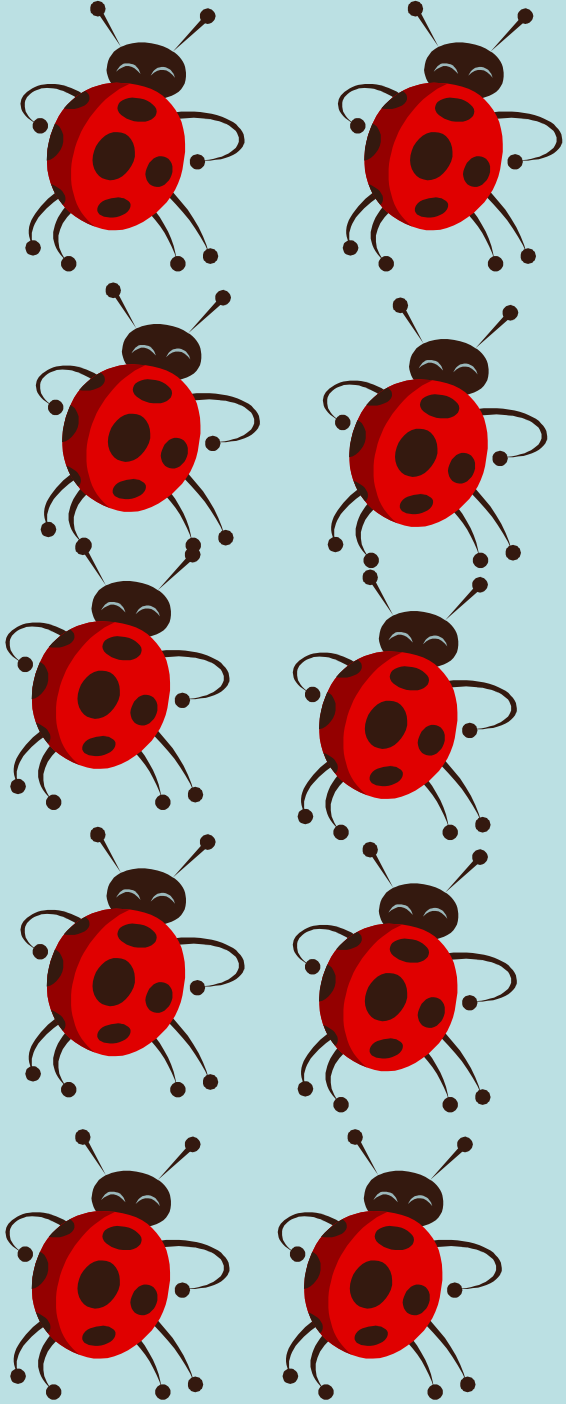
$$20 - 9 = 11$$



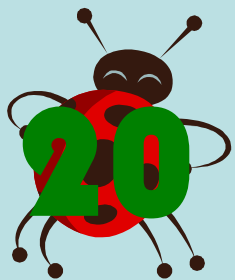
$$12 + 8 = 20$$

$$20 - 8 = 12$$

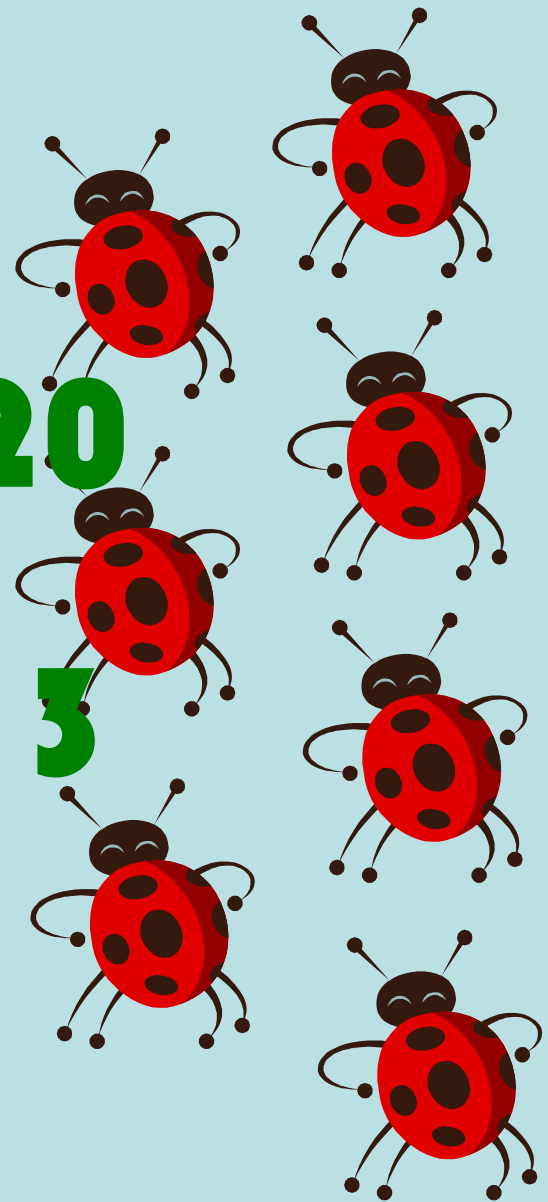


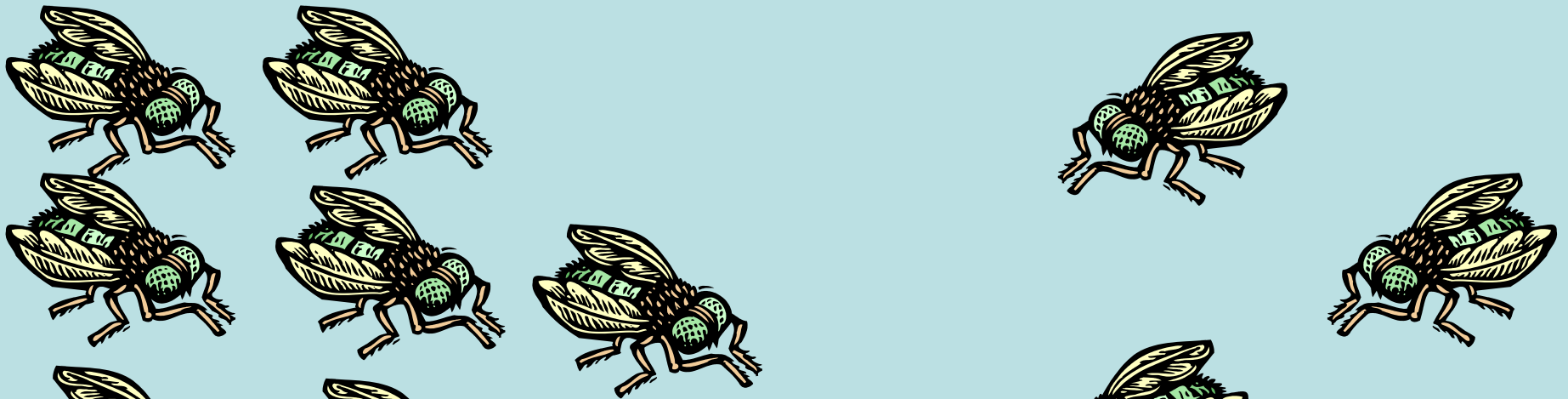


$$13 + 7 = 20$$

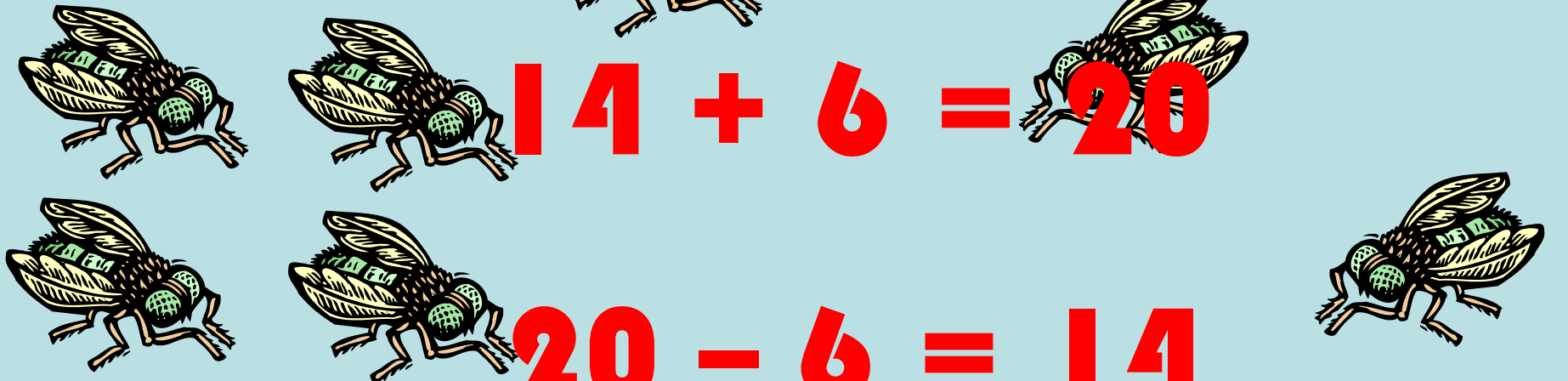


$$20 - 7 = 13$$

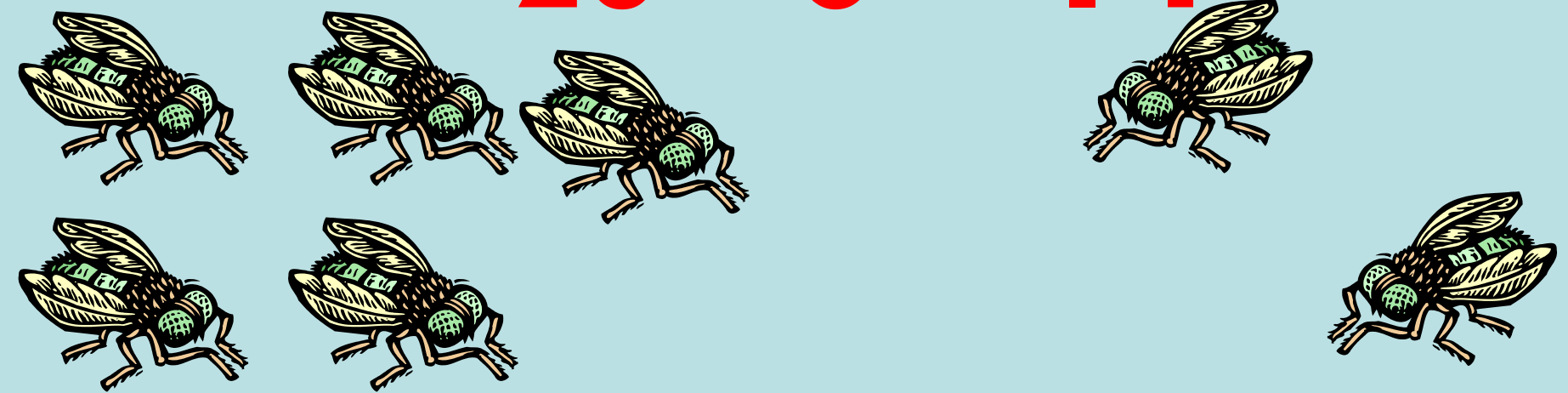


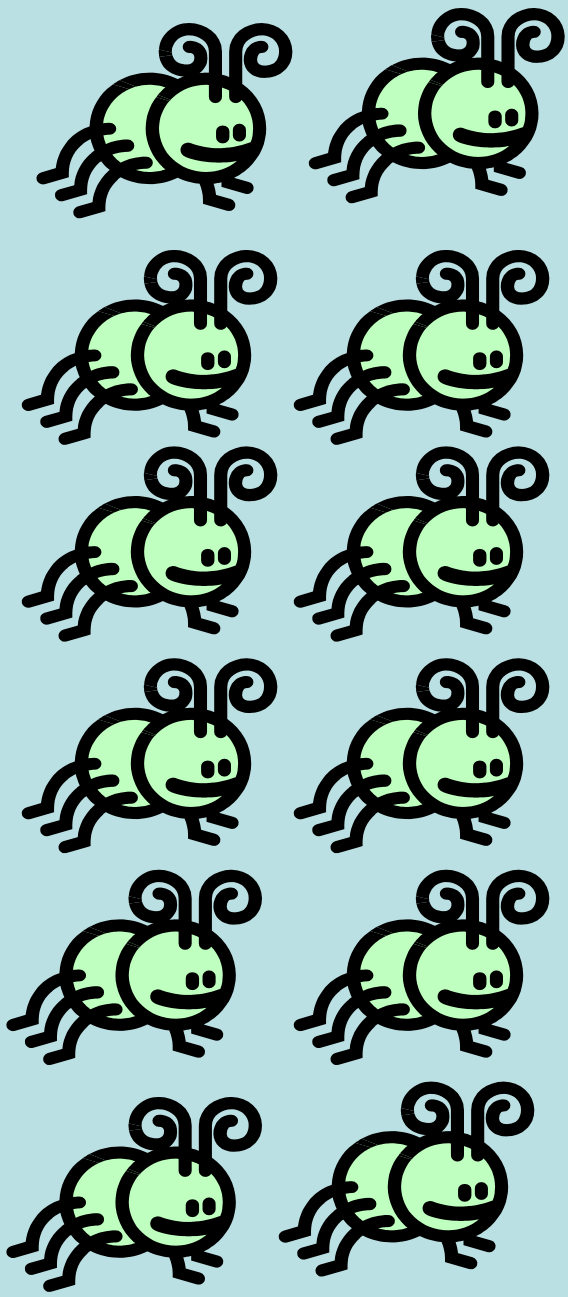


$$14 + 6 = 20$$

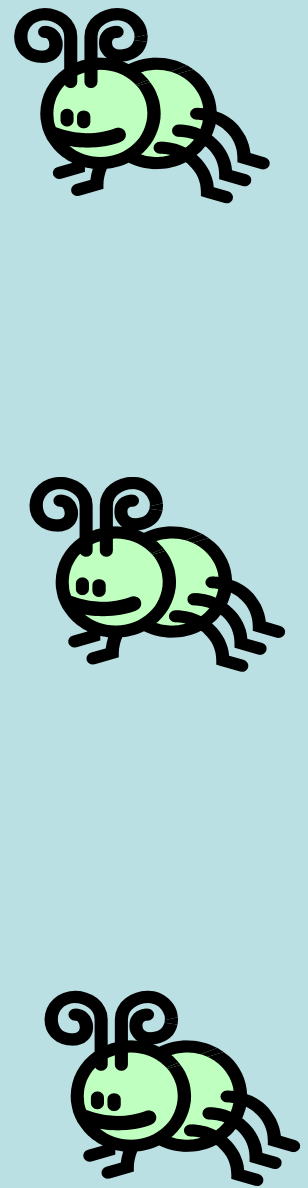


$$20 - 6 = 14$$



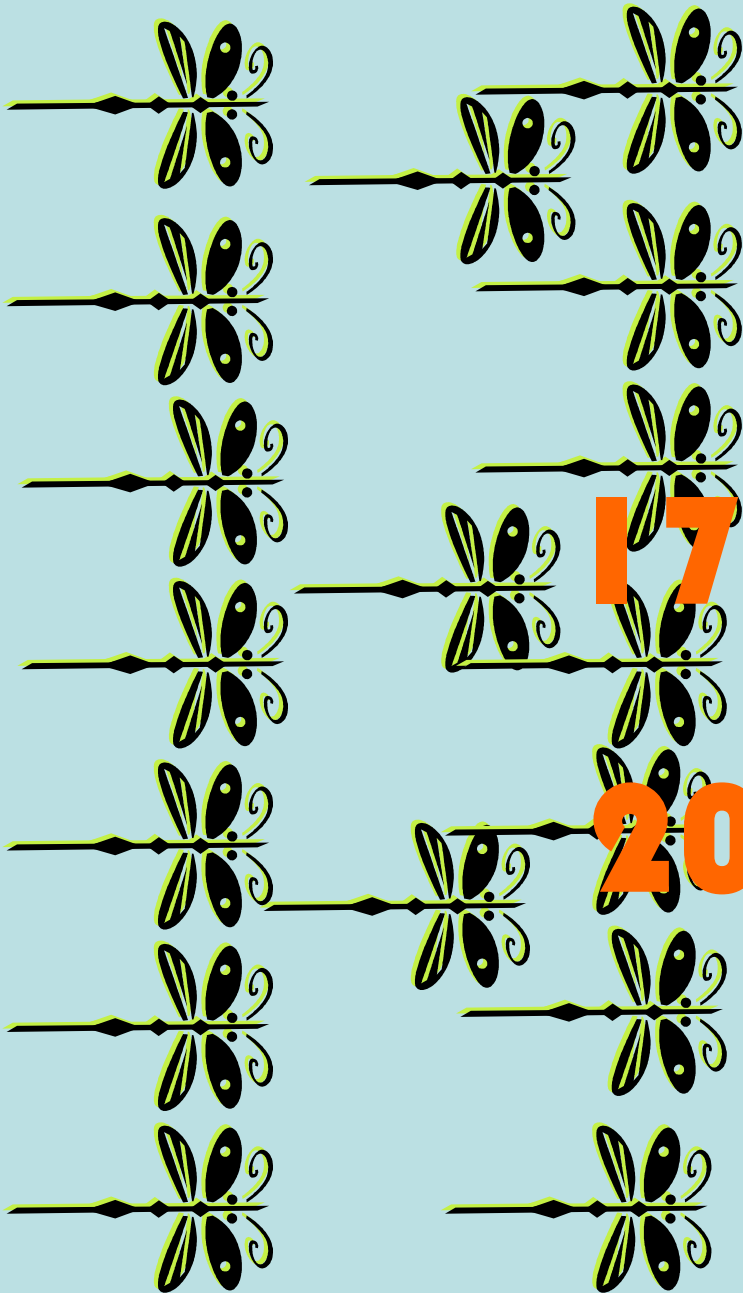


$$15 + 5 = 20$$
$$20 - 5 = 15$$




$$16 + 4 = 20$$

$$20 - 4 = 16$$



17

+

3

=

20

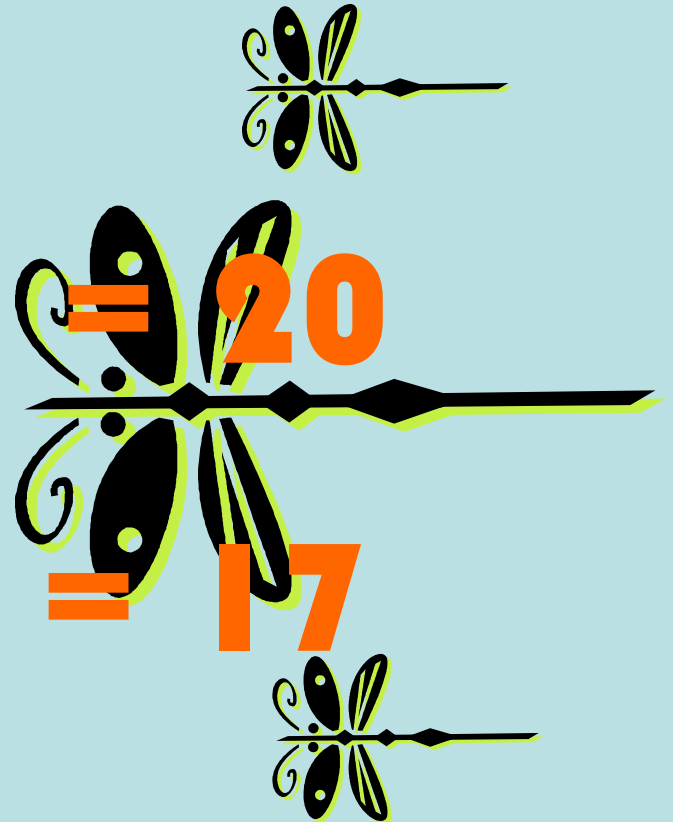
20

-

3

=

17





18

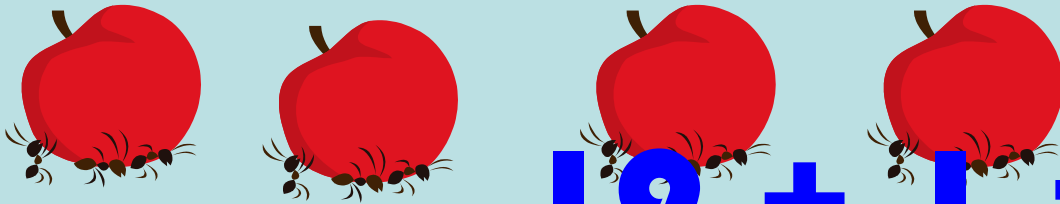
+ 2 =

20

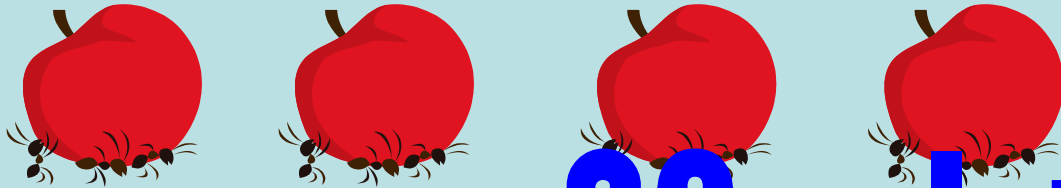
20

- 2 =

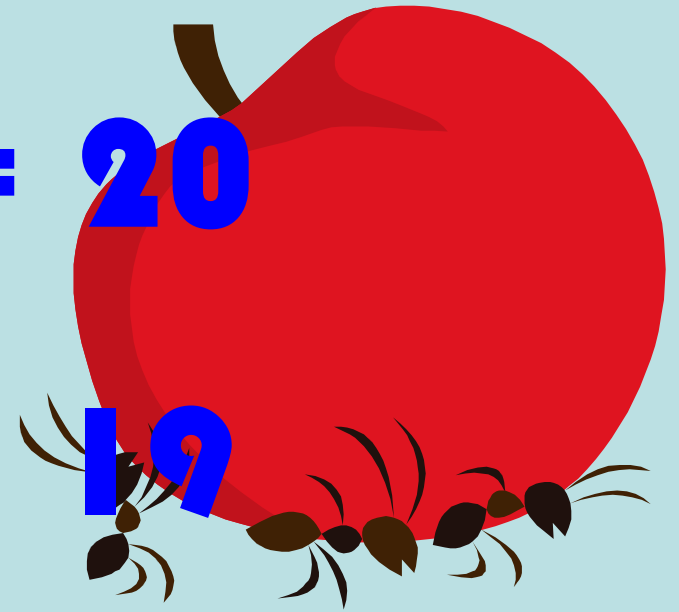
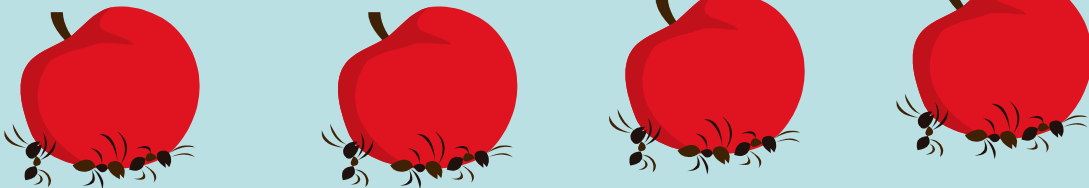
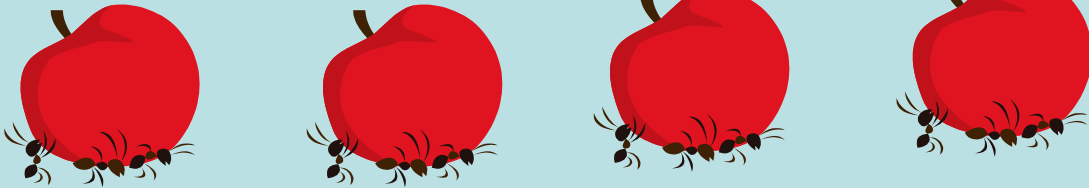
18



$$19 + 1 = 20$$



$$20 - 1 = 19$$



Checking with the inverse:

The inverse is the opposite operation so addition and subtraction are the inverse of each other.

The inverse is very useful for checking calculations.

Examples

$$11 + 5 = 16 \text{ so } 16 - 5 = 11$$

$$10 + 8 = 18 \text{ so } 18 - 8 = 10$$

Or the other way round:

$$13 - 6 = 7 \text{ so } 7 + 6 = 13$$

$$14 - 9 = 5 \text{ so } 5 + 9 = 14$$

Maths is full of patterns!

Task: Use your knowledge of the inverse to complete the 'pyramid puzzles' activity.

Remember: Use your number line carefully to count on (when adding +) and count back (when subtracting -). Always check with the inverse!