

Fantasy stories

Fiction

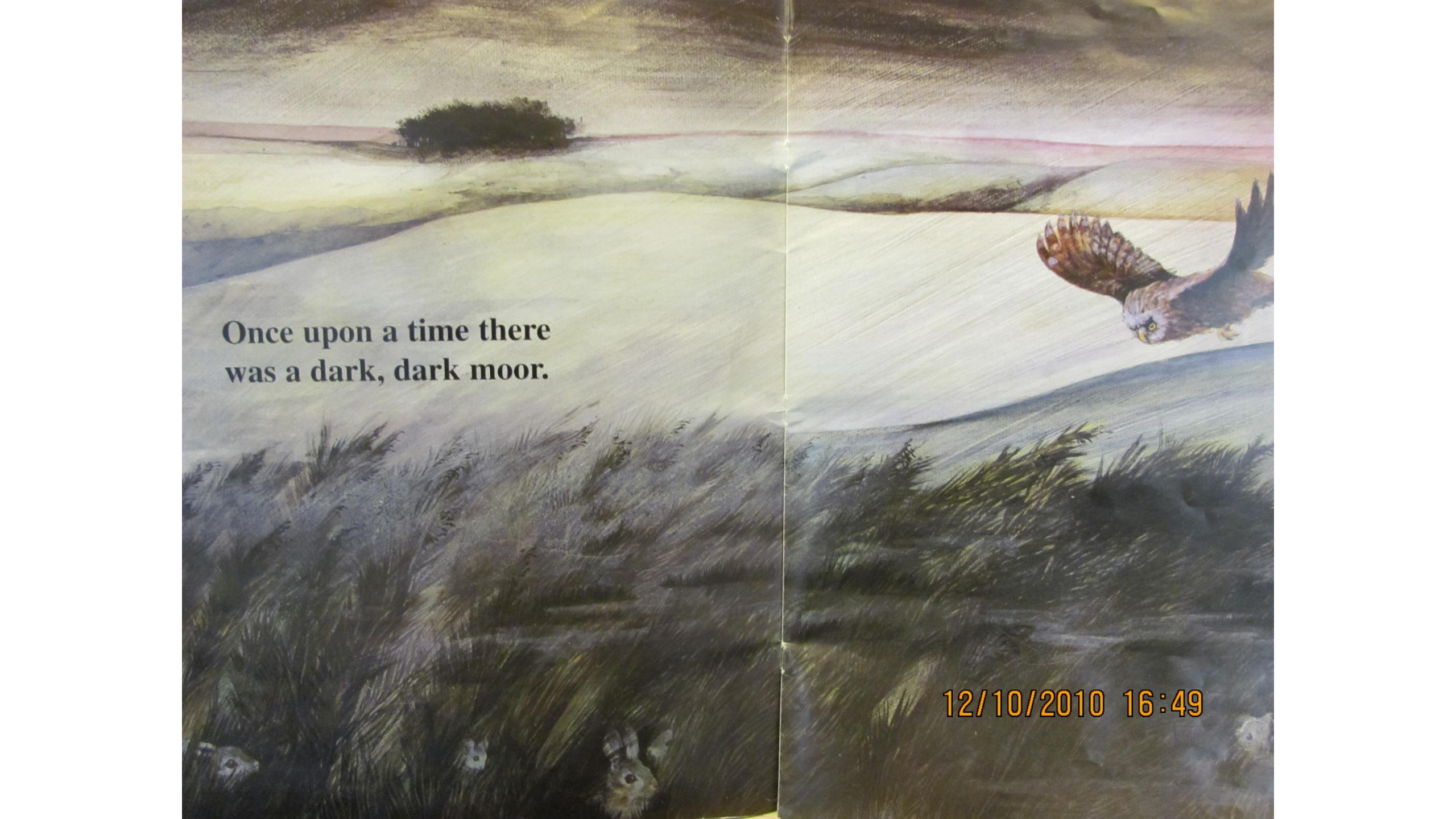


Imaginary

A Dark Dark Tale




by Ruth Brown

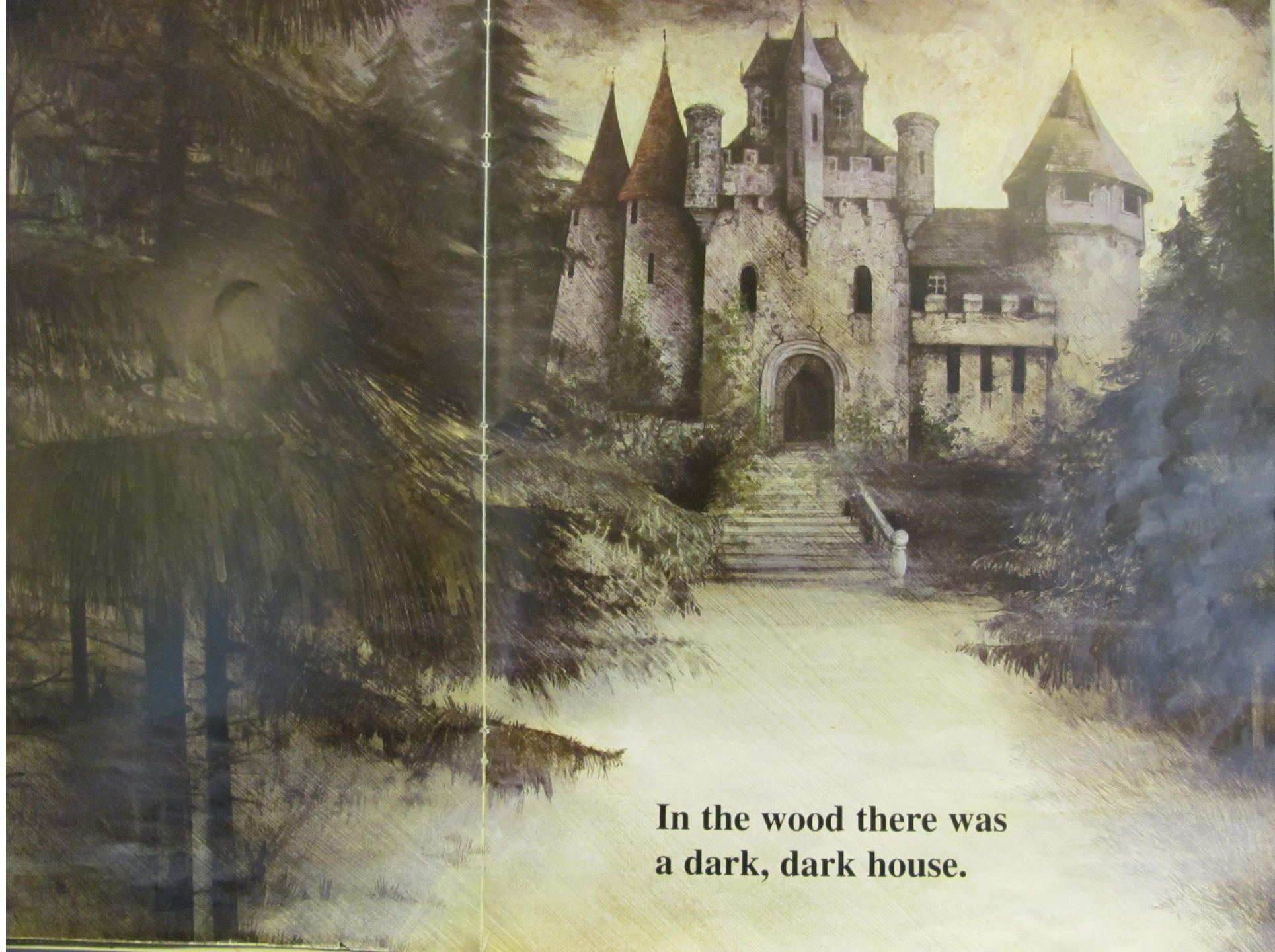


Once upon a time there
was a dark, dark moor.

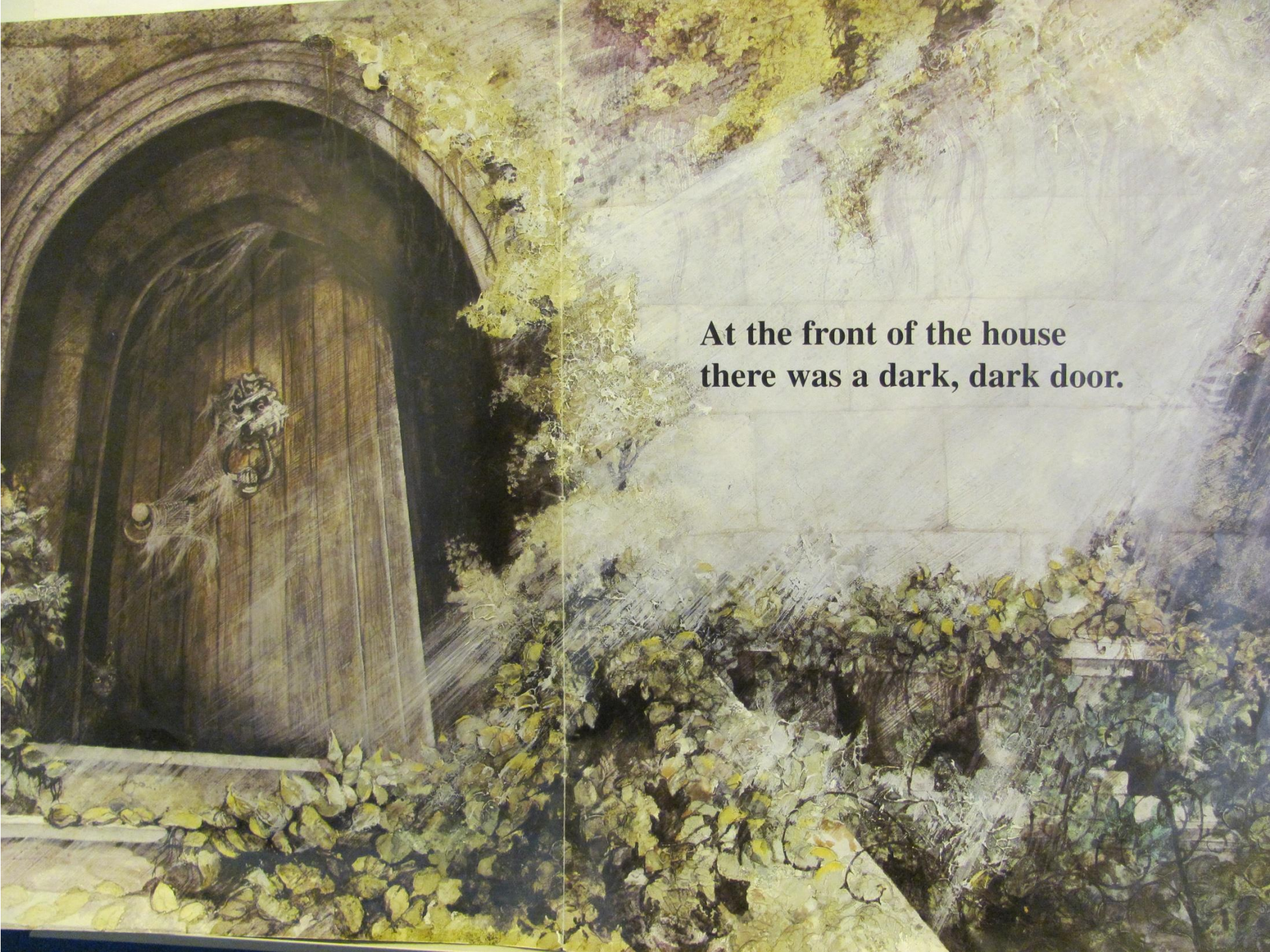
12/10/2010 16:49

The illustration is a dark, atmospheric scene. In the foreground, a light-colored, sandy or grassy path leads from the bottom left towards the center. To the right of the path, there is a dense, dark thicket of bushes or low trees. In the background, a dark, dense forest or wood rises, with tall, thin trees visible through the mist or darkness. The overall color palette is dominated by dark blues, greys, and blacks, with some lighter, yellowish-green highlights on the path and the foliage in the foreground. The style is reminiscent of a classic children's book illustration, with a focus on mood and atmosphere.

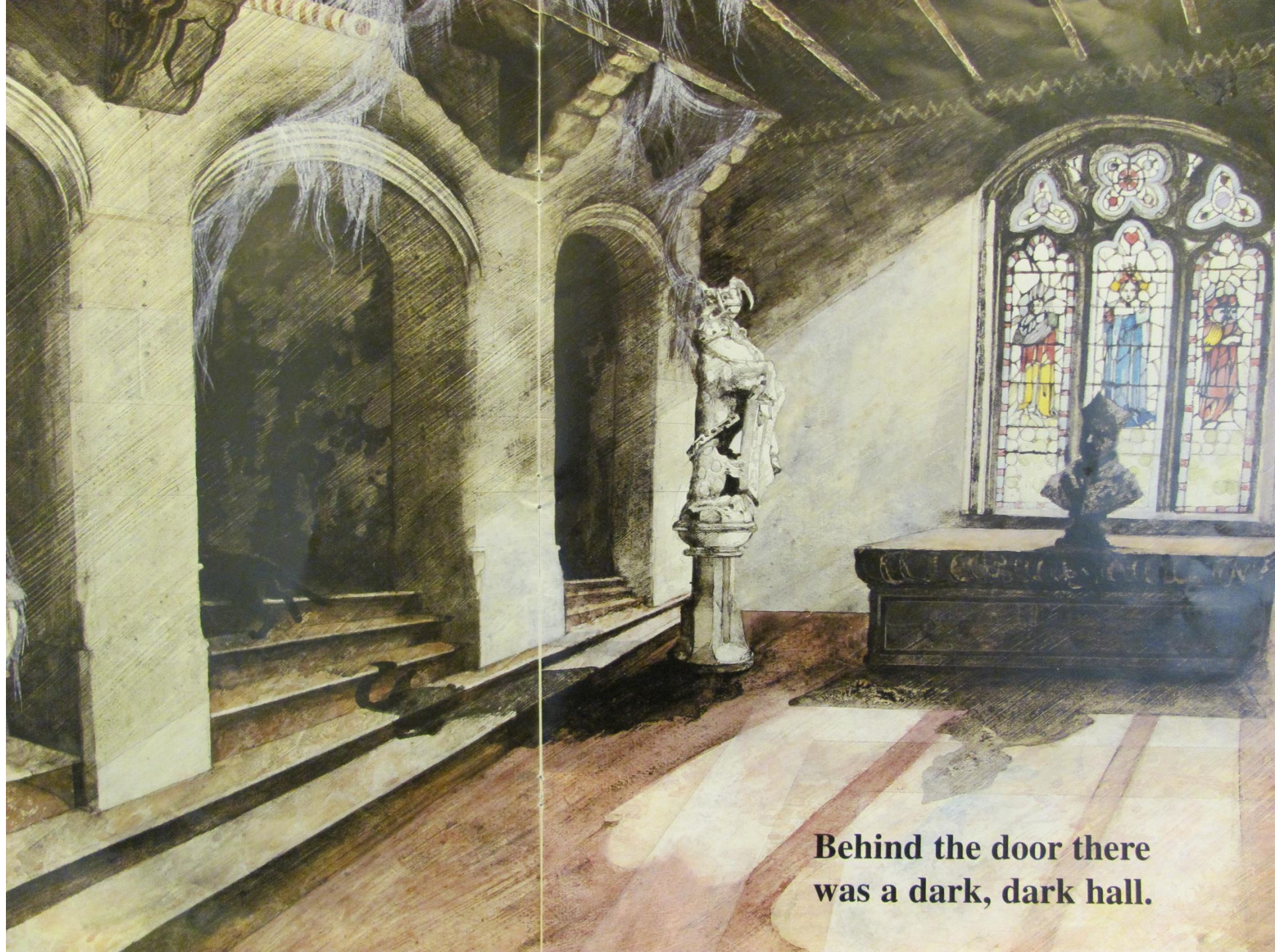
**On the moor there was
a dark, dark wood.**



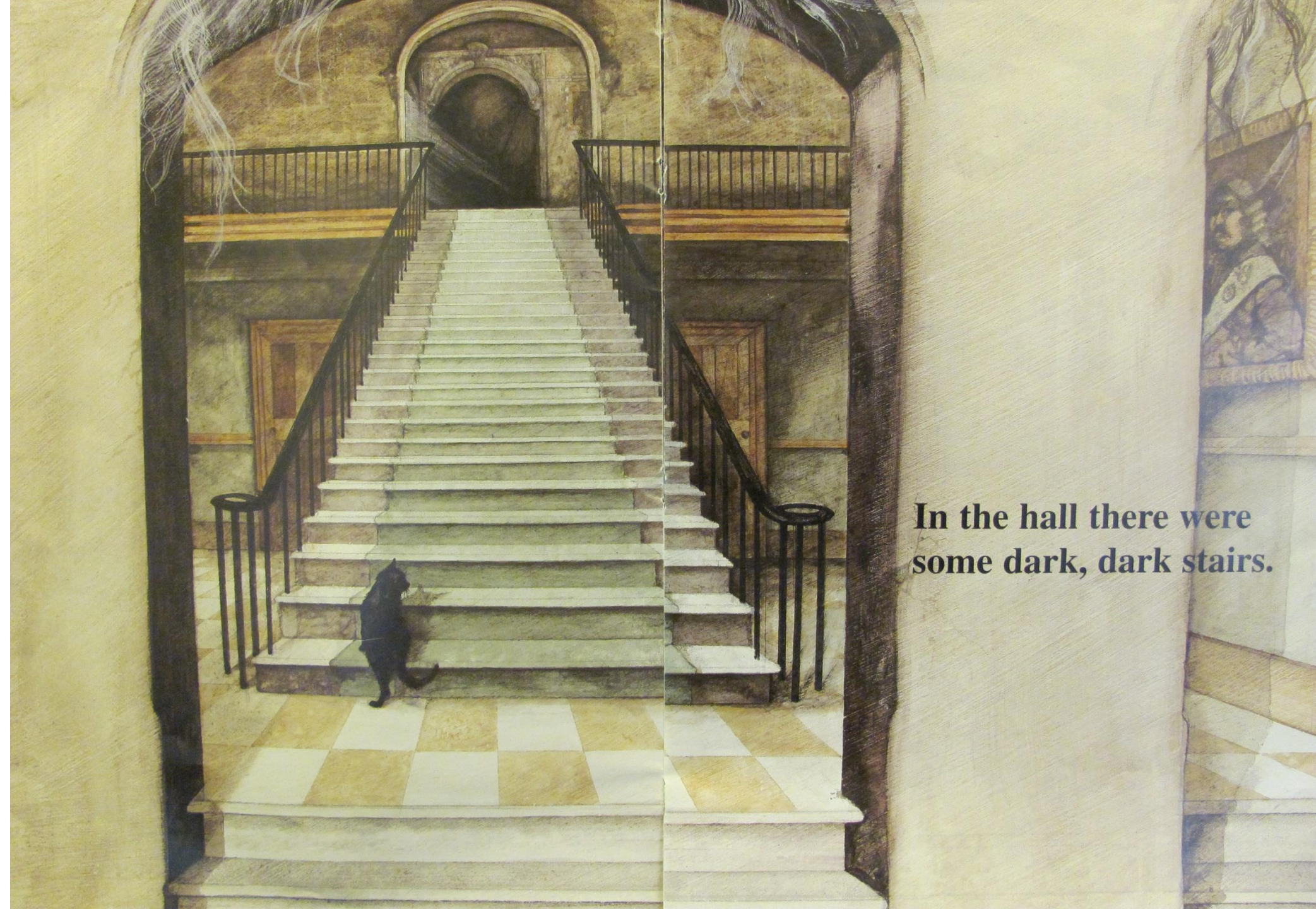
**In the wood there was
a dark, dark house.**



**At the front of the house
there was a dark, dark door.**



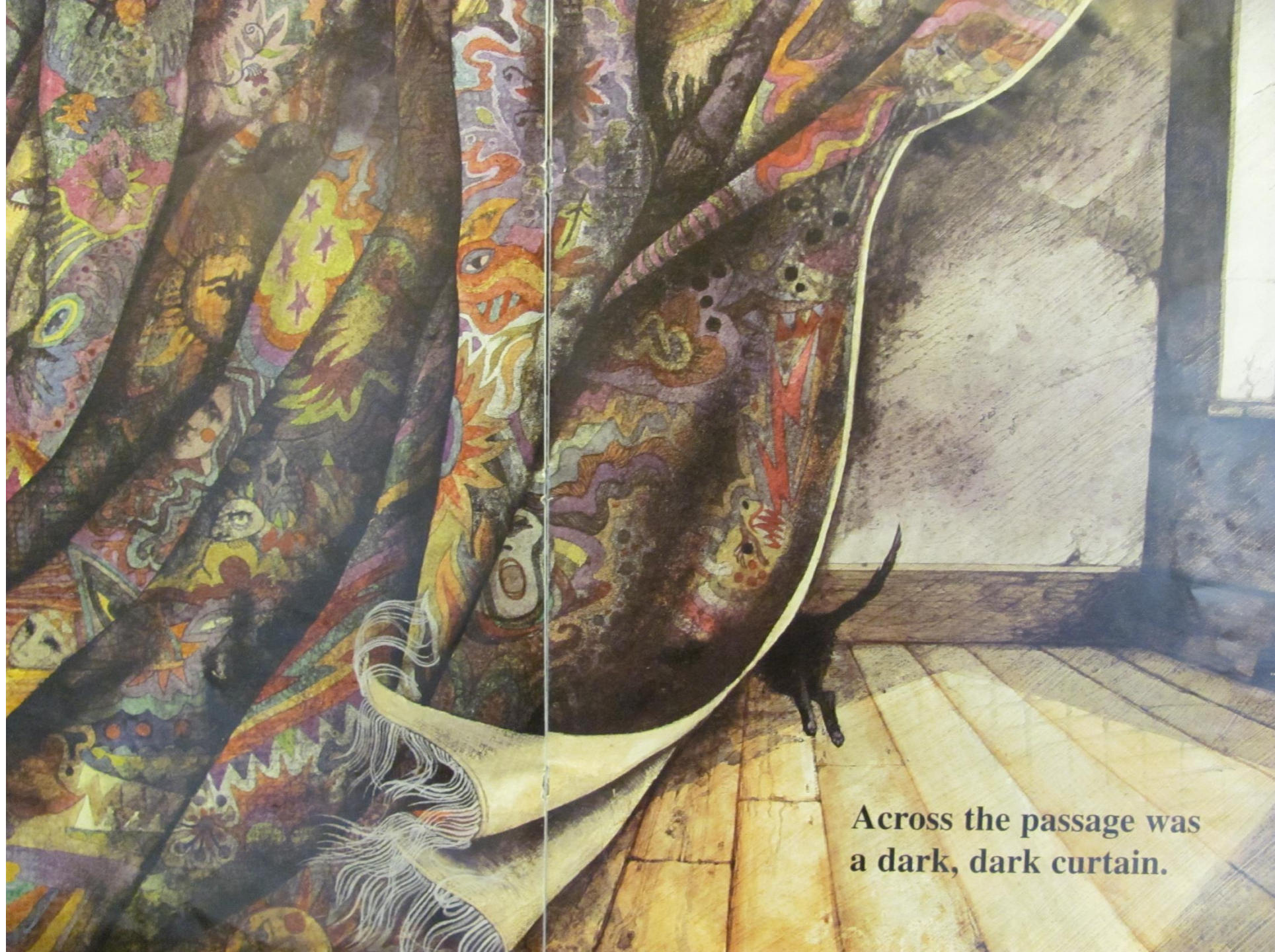
**Behind the door there
was a dark, dark hall.**



**In the hall there were
some dark, dark stairs.**



Up the stairs there was
a dark, dark passage.



Across the passage was
a dark, dark curtain.



**Behind the curtain was
a dark, dark room.**



In the room was a dark,
dark cupboard.



In the cupboard was

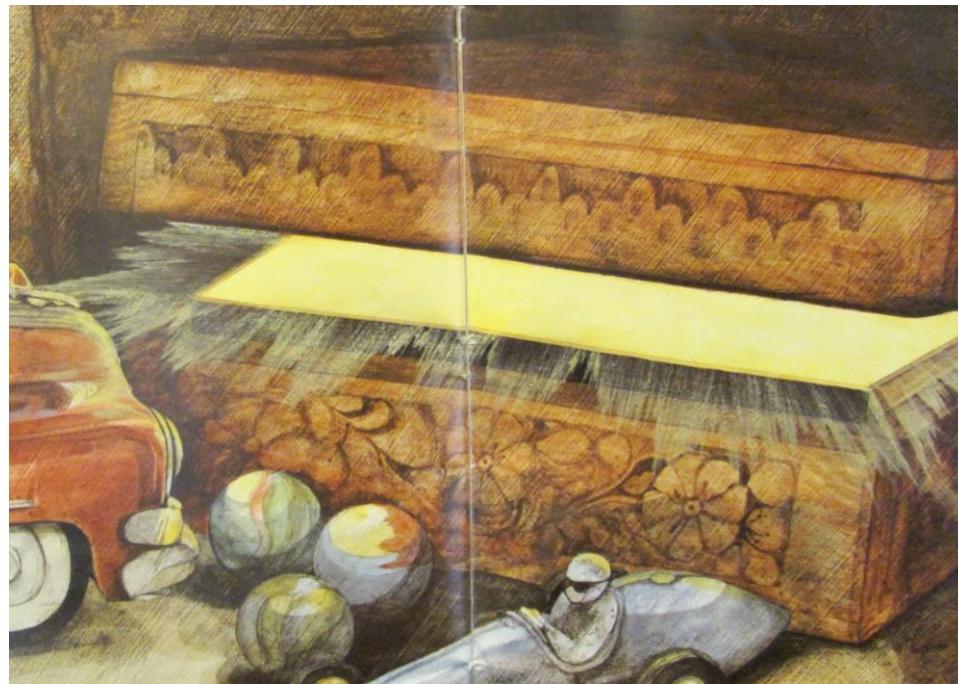


a dark, dark corner.

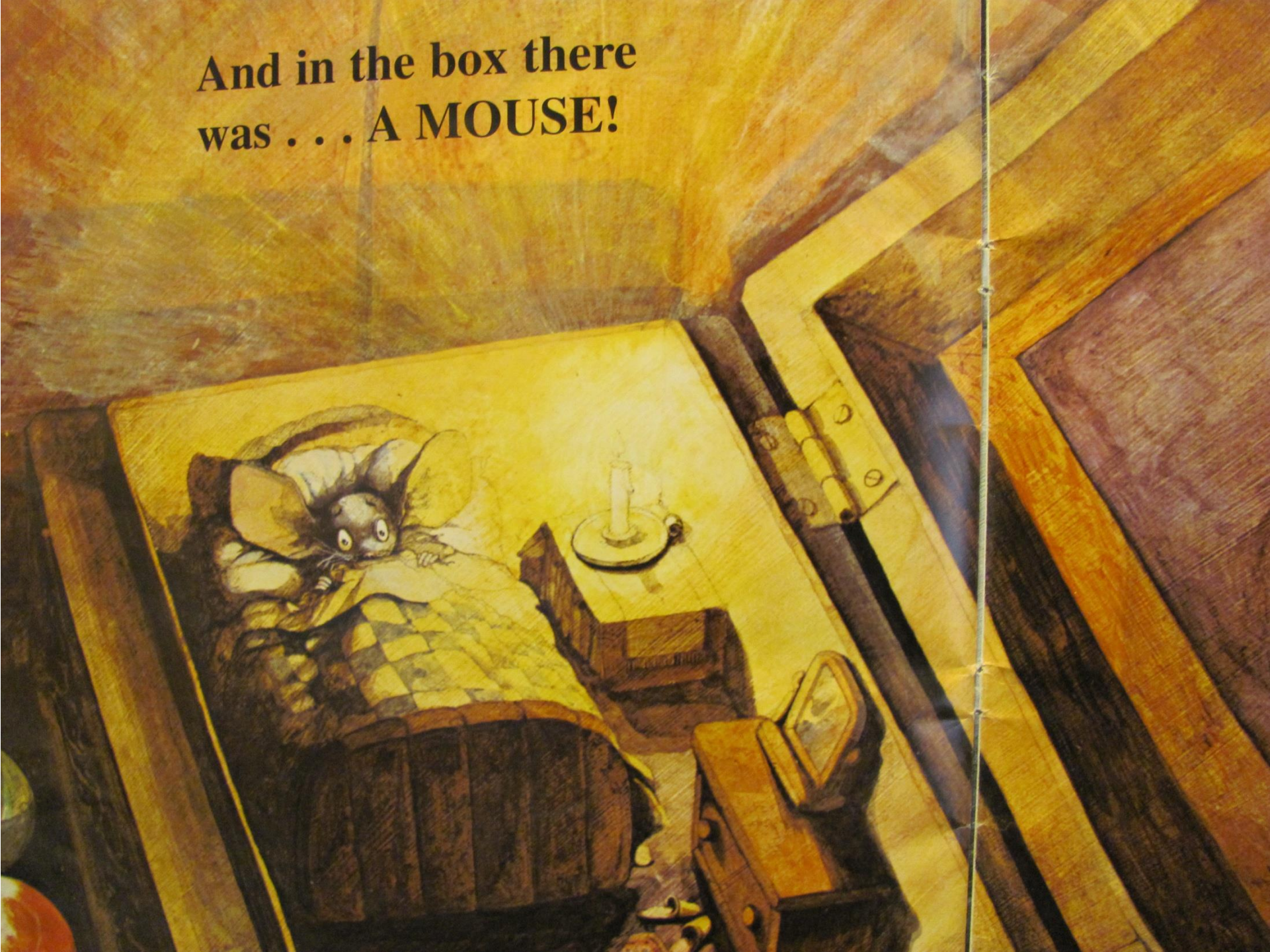


In the corner was
a dark, dark box.

What's in the box?



And in the box there
was . . . A MOUSE!



Questions